

Asbestos

Construction material produced prior to 1980 can contain asbestos, which can be harmful to the human health and the environment. **Inhalation of asbestos fibers can be linked to an increased risk of lung cancer.** It is therefore important that construction materials are removed correctly. If you suspect that material contains asbestos, a proper asbestos abatement company with documented competence issued by the Norwegian Labor Inspection Authority should be contacted.

What should you do?

- If you suspect that any material contains asbestos (in a construction that are being demolished or rehabilitated), contact a firm with documented knowledge of asbestos removal, for instance an asbestos abatement company.
- Remediation of asbestos must be performed by a licensed asbestos abatement company.
- Deliver as hazardous waste (waste type/code 7250).

What is normal-not-hazardous waste?

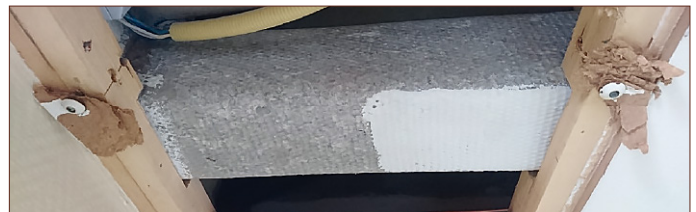
- Construction materials produced after 1980.
- Gypsum boards with paper on both sides.

Classification and labeling of the waste:

Classification of the waste	Waste code	Suggested EAL-code
Asbestos containing construction materials	7250	*170605
Asbestos containing insulation materials	7250	*170601



Eternit boards on house facades.



Square ventilation duct made of gray eternit containing asbestos. Eternit channels have a "waffle pattern" on the surface.



Asbestolux boards in the ceiling in a ventilation room. Asbestos boards often have a white-gray color. Asbestos boards do not have a paper surface. (Gypsum boards has a paper surface and does not normally contain asbestos).



Asbestos material in pipe insulation on pipe bends. Most common in the period from 1955 to 1978.



White asbestos cardboard covering the pipe. Most common in the period from 1900 to 1960.



Wind stopper board (thin, hard, yellow board) in the outer wall behind black cardboard. Can often be found in wooden cladding and in metal board cladding.

Read more about the type of waste here:



Faktaarket er utgitt av
NHP-nettverket
byggemiljo.no
post@nffa.no